

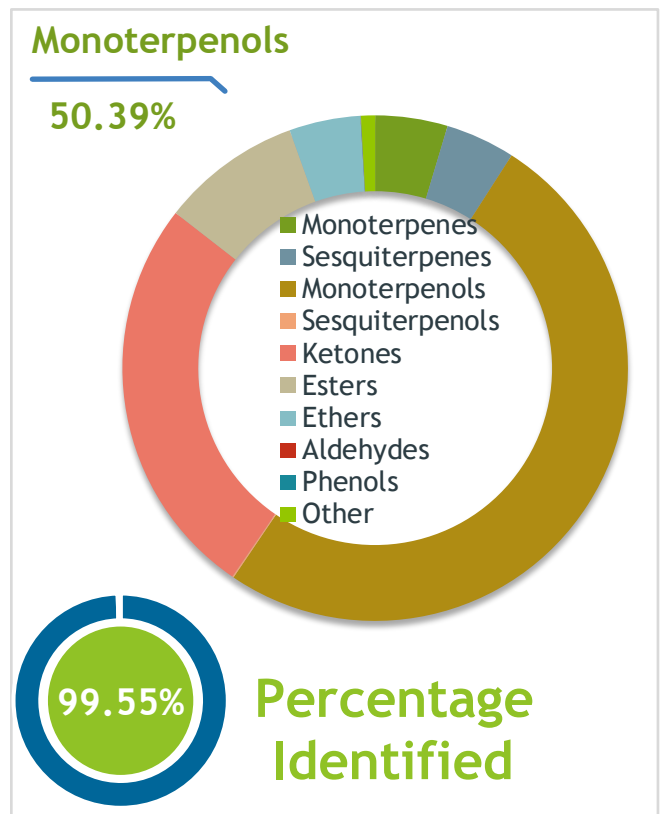
Client **LIVEGOOD** Source 

Peppermint (Mentha x piperita)
TR650-5101217220 - USA

Sample
Peppermint (Mentha x piperita)
Identification #: TR650-5101217220
Type:..... Essential Oil
CAS Number:... 8006-90-4
Live Good

Properties
Country Of Origin | USA
Specific Gravity | NT
Refractive Index | NT

Primary
43.26% | Menthol
17.25% | Menthone
7.19% | Menthyl acetate



Result
APPROVED
10/19/2023

Conclusion
No adulterants, diluents, or contaminants were detected via this method. This oil meets the expected profile for genuine Essential Oil of Peppermint (Mentha x piperita)
Internal Number: | EVS-5875



Essential Validation Services
747 SW 2nd Ave IMB 12 Suite 306
Gainesville, FL 32601
317.361.5044 |
<https://essentialvalidationservices.com/>
Alan Christen

Monoterpenes	4	4.63%
Sesquiterpenes	4	4.45%
Monoterpenols	50.39%	50.39%
Sesquiterpenols		0.09%
Ketones	25.96%	25.96%
Esters	8.99%	8.99%
Ethers	4	4.56%
Aldehydes		0.01%
Phenols		0.02%
Other		0.90%

ESSENTIAL VALIDATION SERVICES | 747 SW 2ND AVE GAINESVILLE, FLORIDA 32601 | 317-361-5044

Client

LIVEGOOD

Source

Peppermint (*Mentha x piperita*)

TR650-5101217220

Total Percentage		99.55%		
Number	RT	Area %	Compound Name	Chemical Family
1	7.05	0.01%	2,5-Diethyltetrahydrofuran	Furan
2	8.09	0.04%	alpha-Thujene	Monoterpene
3	8.35	0.50%	alpha-Pinene	Monoterpene
4	9.09	0.01%	3-Methyl cyclohexanone	Aliphatic Ketone
5	9.91	0.34%	Sabinene	Monoterpene
6	10.08	0.65%	beta-Pinene	Monoterpene
7	10.30	0.08%	1-Octen-3-ol	Aliphatic Alcohol
8	10.49	0.02%	Octan-3-one	Aliphatic Ketone
9	10.66	0.14%	Myrcene	Monoterpene
10	11.01	0.32%	3-Octanol	Aliphatic Alcohol
11	11.30	0.01%	alpha-Phellandrene	Monoterpene
12	11.78	0.13%	alpha-Terpinene	Monoterpene
13	12.12	0.30%	para-Cymene	Monoterpene
14	12.33	1.79%	Limonene	Monoterpene
15	12.42	4.47%	1,8-Cineole	Monoterpene Ether
16	12.70	0.14%	(Z)-beta-Ocimene	Monoterpene
17	13.15	0.05%	(E)-beta-Ocimene	Monoterpene
18	13.63	0.40%	gamma-Terpinene	Monoterpene
19	14.16	0.95%	trans-Sabinene hydrate	Monoterpenol
20	14.85	0.11%	Terpinolene	Monoterpene
21	15.58	0.44%	Linalool	Monoterpenol
22	15.72	0.04%	2-Methylbutyl 2-methylbutyrate	Aliphatic Ester
23	15.89	0.01%	Isoamyl isovalerate	Aliphatic Ester
24	15.98	0.08%	2-Methyl Butyl Isovalerate	Monoterpene Ester
25	16.53	0.04%	Octan-3-yl acetate	Aliphatic Ester
26	16.63	0.04%	cis-para-Menth-2-en-1-ol	Monoterpenol
27	16.88	0.03%	Alloocimene	Monoterpene
28	17.37	0.03%	cis-Sabinol	Monoterpenol
29	17.49	0.02%	trans-para-Menth-2-en-1-ol	Monoterpenol
30	17.72	0.12%	Isopulegol	Monoterpenol
31	18.14	17.25%	Menthone	Monoterpene Ketone
32	18.47	6.89%	Isomenthone	Monoterpene Ketone
33	18.50	Co-Eluting	Menthofuran	Monoterpene Ether
34	18.76	4.30%	Neomenthol	Monoterpenol
35	18.94	0.12%	Isopulegone	Monoterpene Ketone

Client

LIVEGOOD

Source



Peppermint (*Mentha x piperita*)
TR650-5101217220

Number	RT	Area %	Compound Name	Chemical Family
36	19.326	43.26%	Menthol	Monoterpene Ketone
37	19.63	0.71%	Neoisomenthol	Monoterpenol
38	19.79	0.22%	Isomenthol	Monoterpenol
39	19.92	0.26%	alpha-Terpineol	Monoterpenol
40	21.30	0.01%	Nerol	Monoterpenol
41	21.79	1.30%	Pulegone	Monoterpene Ketone
42	22.49	0.37%	Piperitone	Monoterpene Ketone
43	23.22	0.01%	Geranial	Monoterpene Aldehyde
44	23.40	0.29%	neo-Menthyl acetate	Monoterpene Ester
45	23.51	0.01%	1-Decanol	Monoterpenol
46	24.21	7.19%	Menthyl acetate	Monoterpene Ester
47	24.35	0.02%	Thymol	Monoterpenol
48	24.81	0.20%	IsoMenthyl acetate	Monoterpene Ester
49	24.95	0.01%	neo-Isolsopulegyl acetate	Monoterpene Ester
50	25.95	0.05%	delta-Elemene	Sesquiterpene
51	26.85	0.02%	Eugenol	Phenylpropanoid
52	27.21	1.13%	Neryl acetate	Monoterpene Ester
53	27.80	0.09%	alpha-Copaene	Sesquiterpene
54	28.11	0.21%	beta-Bourbonene	Sesquiterpene
55	28.42	0.08%	beta-Elemene	Sesquiterpene
56	28.55	0.02%	cis-Jasmone	Jasmonate
57	28.68	0.02%	1-Tetradecene	Alkene
58	29.01	0.07%	Isoitalicene	Sesquiterpene
59	29.42	0.02%	cis-alpha-Bergamotene	Sesquiterpene
60	29.60	2.06%	Isocaryophyllene	Sesquiterpene
61	30.89	0.04%	beta-Copaene	Sesquiterpene
62	31.06	0.06%	alpha-Humulene	Sesquiterpene
63	31.13	0.22%	(E)-beta-Farnesene	Sesquiterpene
64	31.58	0.01%	gamma-Gurjunene	Sesquiterpene
65	31.85	0.01%	gamma-Selinene	Sesquiterpene
66	31.92	0.03%	gamma-Murolene	Sesquiterpene
67	32.12	1.17%	Germacrene D	Sesquiterpene
68	32.42	0.10%	beta-Selinene	Sesquiterpene
69	32.71	0.17%	Bicyclgermacrene	Sesquiterpene
70	33.42	0.01%	gamma-Cadinene	Sesquiterpene

ESSENTIAL VALIDATION SERVICES | 747 SW 2ND AVE GAINESVILLE, FLORIDA 32601 | 317-361-5044

Client

LIVEGOOD

Source



Peppermint (*Mentha x piperita*)
 TR650-5101217220

72	35.87	0.01%	Spathulenol	Sesquiterpenol
73	36.02	0.09%	Caryophyllene oxide	Sesquiterpene Ether
74	36.52	0.08%	Viridiflorol	Sesquiterpenol

ESSENTIAL VALIDATION SERVICES | 747 SW 2ND AVE GAINESVILLE, FLORIDA 32601 | 317-361-5044